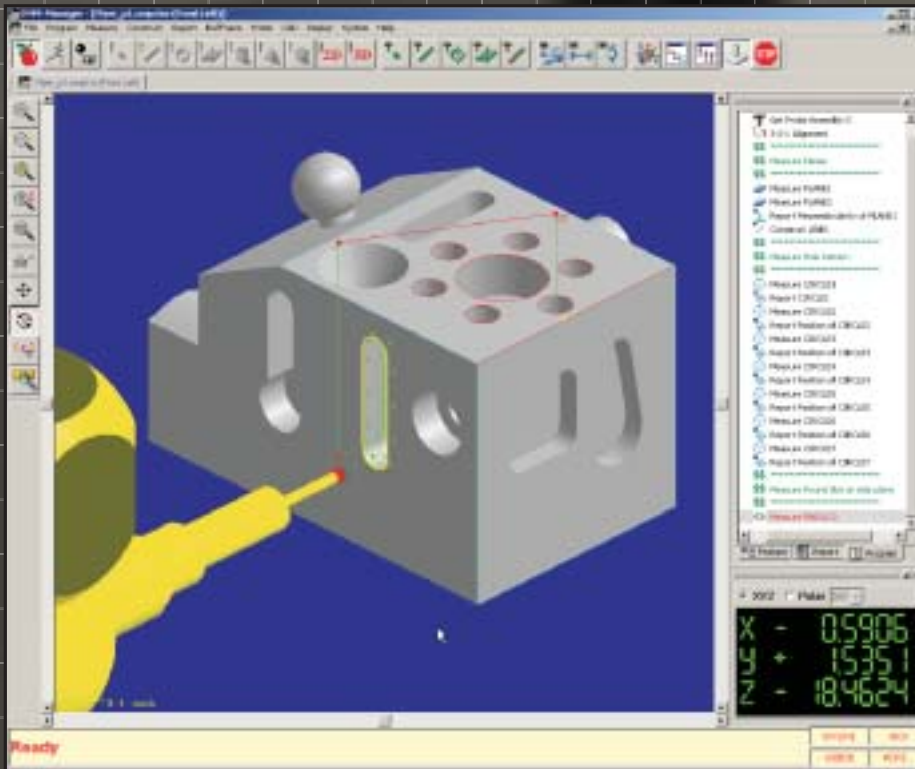


# CMM-Manager

*A Full-Featured CMM Software Package*



CMM-Manager is a task-oriented, highly intuitive measurement software package for your CMMs. It is a fully integrated environment supporting walk-in quick-measure, one-click CAD-measure, collision-free CAD-teach, virtual simulation, real-time verification, advanced path planning, CAD alignment and Datum alignment.

CMM-Manager also offers you flexible yet easy-to-use functionalities, including graphical probe configuration management, automatic tip calibration, cross section scanning and hole pattern measurement.

**Quick • Easy • Smart**



Integrated  
Quality  
[www.IQ-Metrology.com](http://www.IQ-Metrology.com)