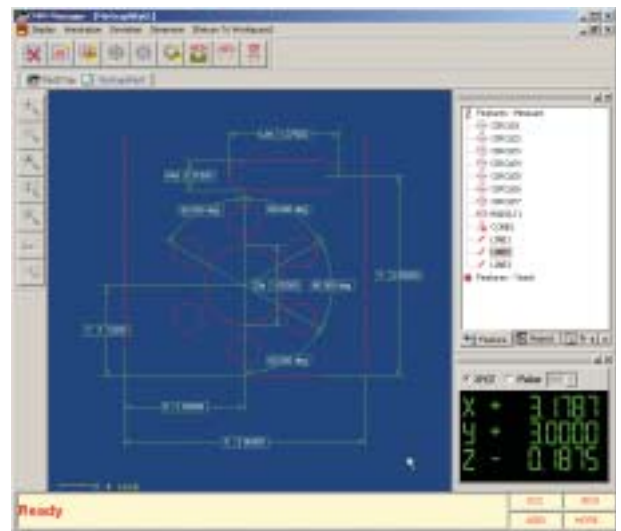


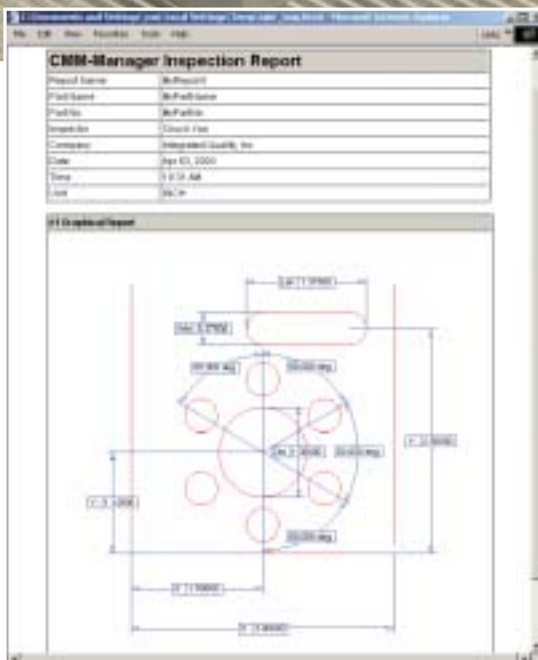
◀ Walk-in Measurement

CMM-Manager
... offers clear and simple user interface design and enables the operator to quickly measure complicated features, such as hole patterns, in minutes.



▲ Graphical Dimensioning

CMM-Manager
... provides intuitive and easy-to-use graphical dimensioning tools. The operator can quickly snap measured features on the screen to display dimensions including distance, angle, and size.



◀ Web-ready Report

CMM-Manager
... allows the operator to quickly create a web-ready HTML report which can be emailed to customer or published on company intranet for information exchange and sharing.