

◀ Automatic Probing Angle Selection

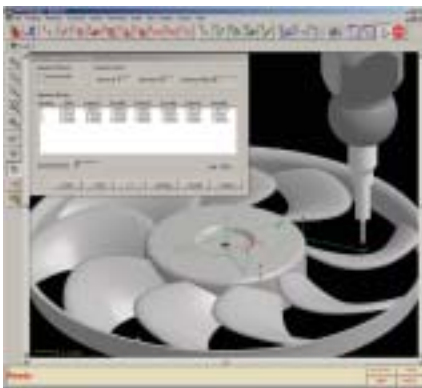
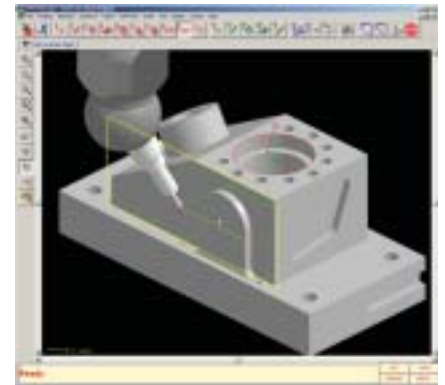
CMM-Manager

...automatically selects the best probing angle to measure features. When necessary, CMM-Manager will select multiple probing angles in order to inspect difficult-to-measure features such as deep pockets and through holes.

Automatic Collision Avoidance ▶

CMM-Manager

...intelligently modifies probe moving path to avoid any obstacles along the path once a probe collision is detected. As this is done automatically, it smartly generates completely collision-free inspection path.



◀ Iterative Datum Alignment for Soft Fixturing

CMM-Manager

...provides powerful datum alignment tool which aligns a part to designated datum points. This soft fixturing function eliminates the need of dedicated hard fixtures and helps customers to reduce high cost in hard fixture fabrication and maintenance.

Best-fit Analysis for Improved Inspection Accuracy ▶

CMM-Manager

...has a built-in best-fit analysis engine that can be used to compare measurement data with CAD model. This powerful best-fit function eliminates the influence of misalignment and cosine error in tolerance evaluation thus helps the user to achieve the best possible inspection accuracy.

